



Thompson-Nicola Regional District

Elephant Hill Fire – Evacuation Orders for Village of Clinton and Properties South-East of Clinton

For Immediate Release (July 29, 2017 – 4:30 p.m.):

The Elephant Hill fire has that has been threatening the Village of Clinton and surrounding areas has now resulted in the immediate evacuation of **all properties** located within the red Evacuation Order area, as shown on the attached maps. This includes the entire Village of Clinton, with the exception of the Chasm Mill site, as well as some additional properties north-east of Clinton, including:

- 925, 955, 985 McCall Road
- 780, 793, 799, 802, 807, 808, 815, 820, 823, 825 Valley Road

Anyone in the described area must leave immediately. It is suggested that evacuees shut off all gas and electrical appliances, other than refrigerators and freezers. If evacuees have large animals/livestock in need of shelter, please contact the TNRD EOC at 1-866-377-7188.

Highway 97 has been closed at 70 Mile House and south of Clinton due to the fire. The highway will remain open southbound at Clinton to support the evacuation of residents to Kamloops.

Evacuees requiring support services such as food and accommodation must register at the Sandman Centre at 300 Lorne Street, Kamloops, BC. Those that do not require these services are still required to register with the Red Cross at 1-800-863-6582 or www.redcross.ca

The attached maps shows both areas of evacuation.

For more information contact:

EOC Information Officer,

eocommunications@tnrd.ca, 1-866-377-7188

The TNRD covers 11 municipalities (Ashcroft, Barriere, Cache Creek, Chase, Clearwater, Clinton, Kamloops, Logan Lake, Lytton, Merritt and Sun Peaks) and 10 Electoral Areas - “A” (Wells Gray Country), “B” (Thompson Headwaters), “E” (Bonaparte Plateau), “I” (Blue Sky Country), “J” (Copper Desert Country), “L”, “M”, “N”, “O” (Lower North Thompson) and “P” (Rivers and the Peaks). The

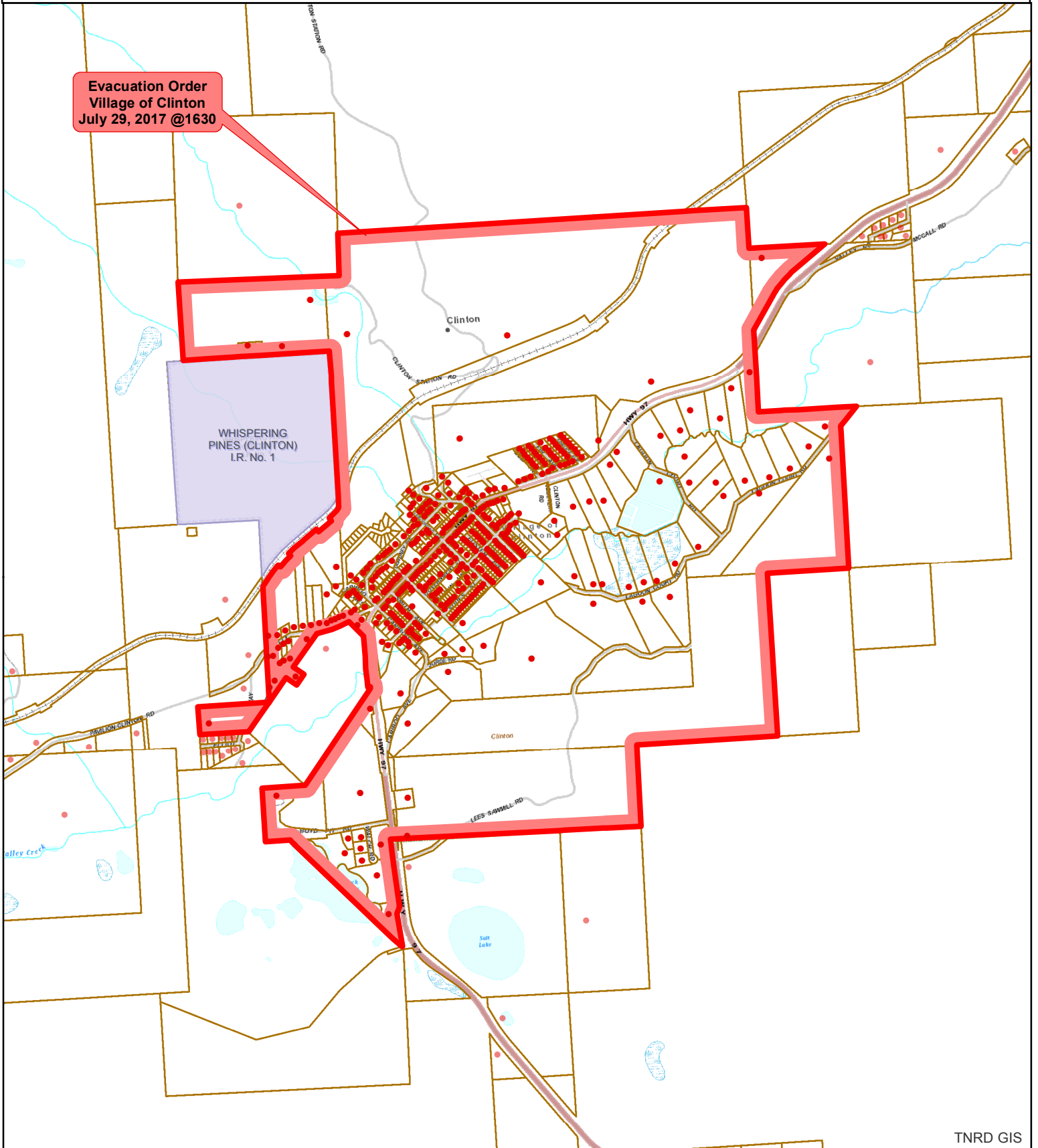
TNROAD provides over 120 services including planning and building inspection, solid waste management, emergency preparedness and 9-1-1 services, recreation, utilities, television river buoys, transit, tourism, library services and operates a film commission.



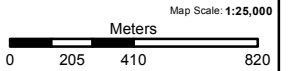
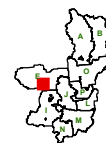
Thompson Nicola Regional District
 Village of Clinton - K20637
EVACUATION ORDER



Evacuation Order
 Village of Clinton
 July 29, 2017 @1630



- Evacuation All Clear
 - Evacuation Order
 - Rescind
 - Evacuation Alert
- Address Points



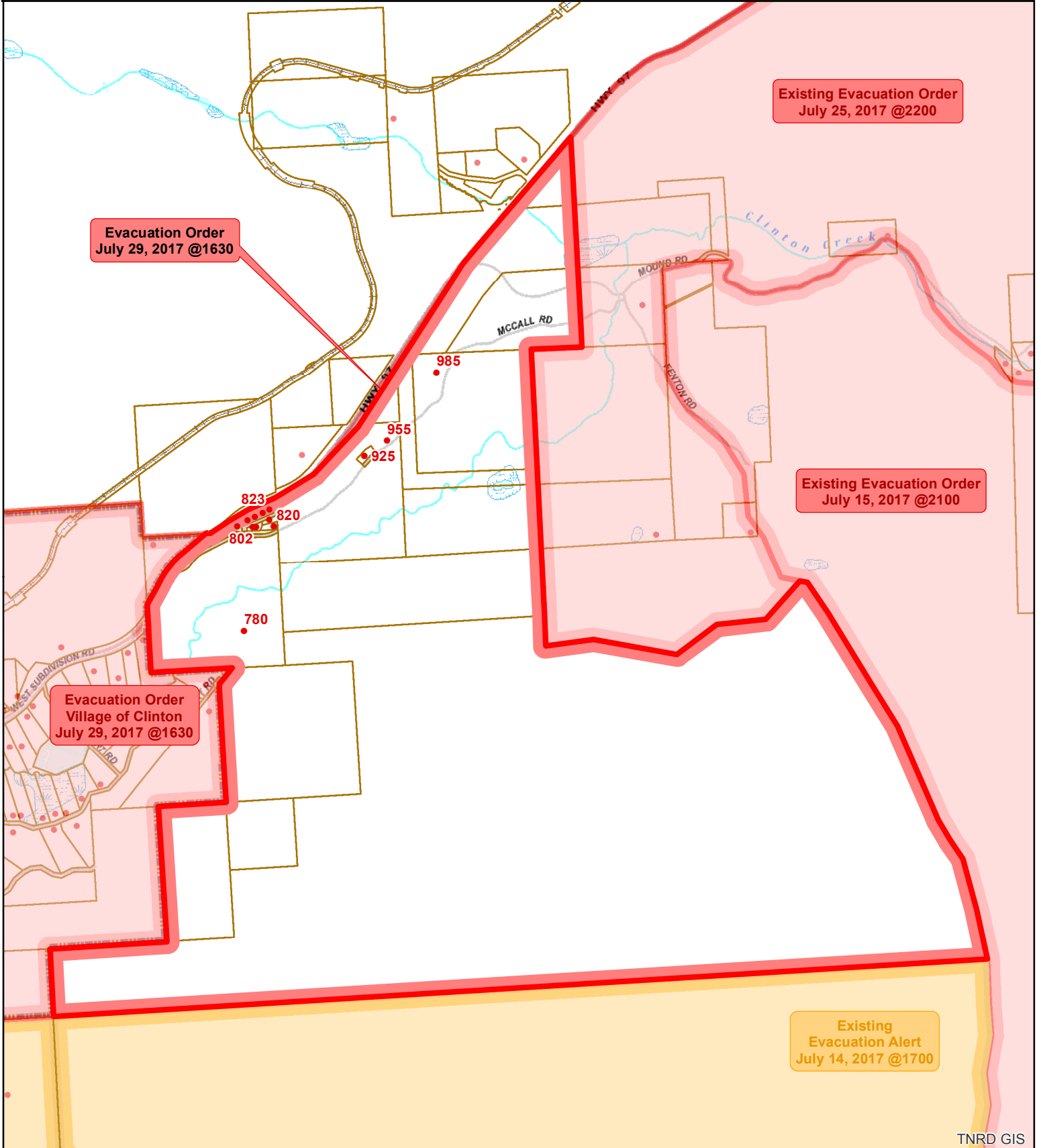
The information on this map was compiled by the TNRD for regulatory and internal reference purposes only. No representation or warranty is made as to the accuracy of the information.

Map Drawn: 29 Jul 2017 @ 4:08:50 PM

TNRD GIS



Thompson Nicola Regional District
 North East of Clinton - K20637
EVACUATION ORDER



- Evacuation All Clear
- Evacuation Alert
- Rescind
- Evacuation Order
- Address Points

Map Scale: 1:30,185

Meters

0 245 490 980

The information on this map was compiled by the TNRD for regulatory and internal reference purposes only. No representation or warranty is made as to the accuracy of the information.

Map Drawn: 29 Jul 2017 @ 4:38:54 PM

TNRD GIS