



## VILLAGE OF CLINTON WILDFIRE

### EVACUATION ORDER

Pursuant to the Emergency Program Act, an Evacuation Order has been issued by Mayor Jim Rivett from the Village of Clinton.

A rapidly moving wildfire is currently located near the Village of Clinton.

Because of the potential danger to life and health, the Village of Clinton has ordered everyone within the Village of Clinton Chasm Mill site area, as identified on the attached map, to evacuate.

If you are in the described area, you must leave immediately. It is suggested that evacuees shut off all gas and electrical appliances, other than refrigerators and freezers. If you have large animals/livestock in need of shelter, please contact the TNRD EOC at 1-866-377-7188.

If you require support services such as food and accommodation please register at the Sandman Centre at 300 Lorne Street, Kamloops, BC.

If you do not require these services all evacuees are still required to register with the Red Cross at 1-800-863-6582 or [www.redcross.ca](http://www.redcross.ca)

Jim Rivett  
Mayor

20:00 hours

Time

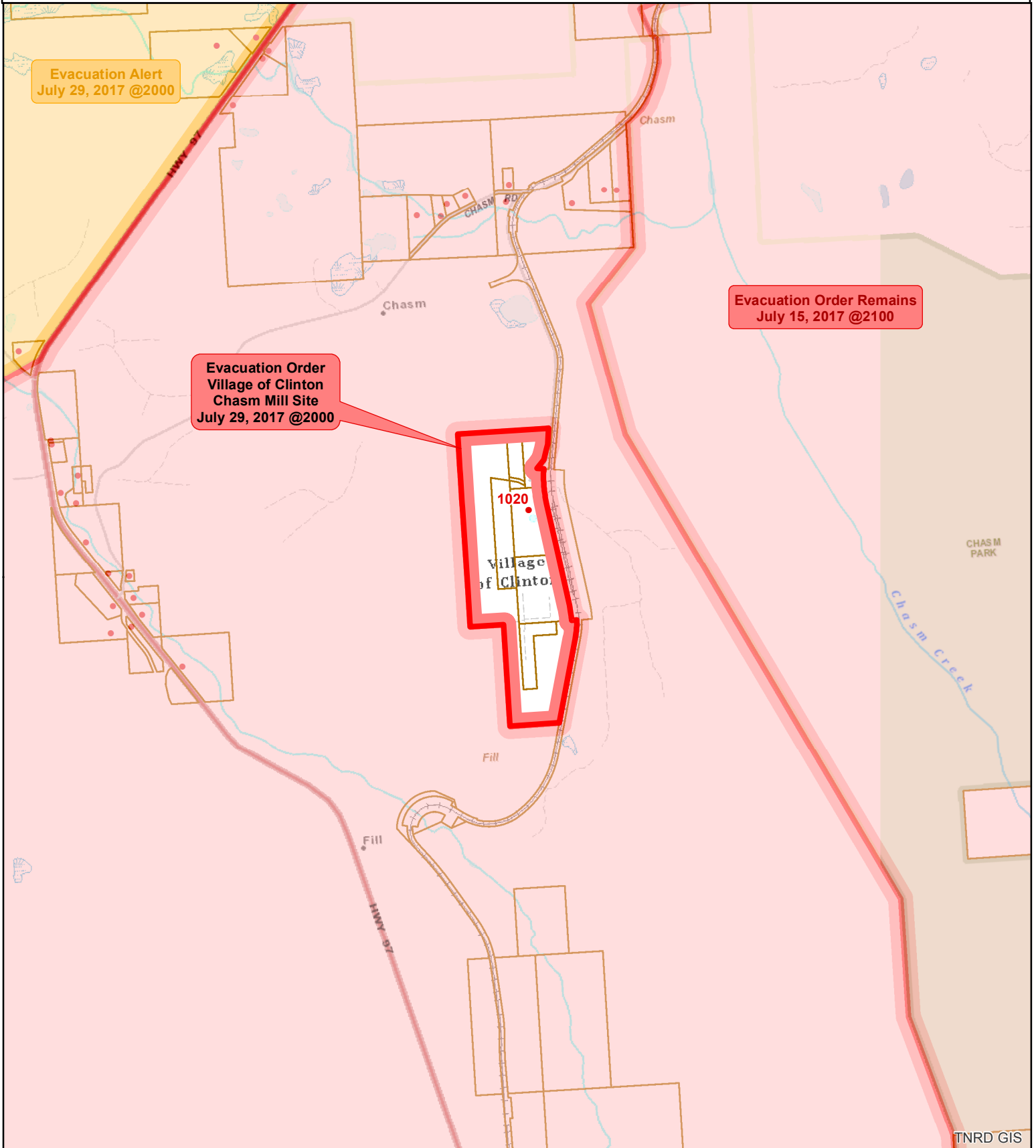
2017/07/29

Date (Yr/Month/Day)

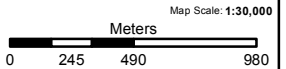
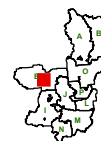
For more information contact: Debbie Sell, Information Officer EOC  
Phone: (250) 377-7188 or  
Toll Free in BC at 1-866-377-7188

FOR IMMEDIATE RELEASE

**Kamloops, BC – JULY 29, 2017 @ 20:00 hrs**



- Evacuation Order
- Evacuation Alert
- Rescind
- Evacuation All Clear
- Address Points



The information on this map was compiled by the TNRD for regulatory and internal reference purposes only. No representation or warranty is made as to the accuracy of the information.

Map Drawn: 29 Jul 2017 @ 7:56:48 PM